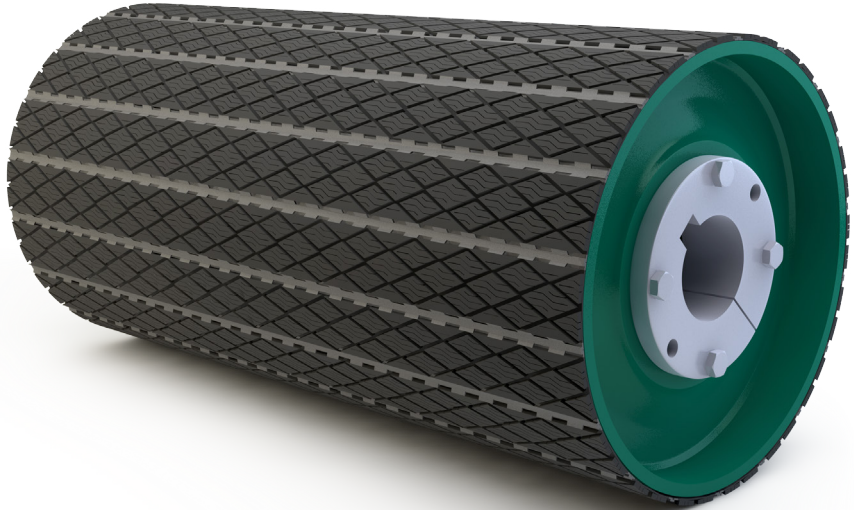


FEATURES AND BENEFITS:

- Factory hot vulcanization under pressure assures the best possible bond of rubber to backing plate
- Steel backing plates are precision formed at the factory to fit each individual pulley
- Metal retainers are permanently welded or bolted to the pulley face to securely hold the pads in place
- Self cleaning of the pulley surface occurs due to spaces between the pads and double grooving
- Pads are field replaceable



Craft-Lag[®] is a registered trademark of Precision Pulley & Idler

CORPORATE OFFICE

PO Box 287
Pella, IA 50219
www.ppipella.com

800.247.1228
641.628.3115
fax 641.628.3658

WEST COAST

Service Center
Sacramento, CA
800.821.9798
fax 916.386.0545

SOUTHWEST

Service Center
Arlington, TX
800.247.1228
fax 641.628.3658

NORTHEAST

Service Center
Lewisberry, PA
800.247.1228
fax 641.628.3658

SOUTHEAST

Service Center
Cleveland, TN
800.247.1228
fax 641.628.3658



CRAFT-LAG®

For Properties of Rubber used in our Lagging, please refer to the back of the Lagging flyer or page 7 of our Pulley Catalog.

1. Select the Craft-Lag part number in the chart to the right. (for more information on suitability of lagging composition for your application, see the pulley catalog. For other types contact your local PPI Representative. Some compounds may require an extended delivery.)
2. To determine the number of Craft-Lag pads needed use the chart at the bottom of the page. Or use the following formula:
 - a) # of pad rows = $OD / 2$
 - b) # of pads = $((\# \text{ rows} * \text{Face Width}) + 6) / 72$ (round up).
3. The number of double retainers needed is the same as the number of pads.
4. The number of single retainers needed is one fourth (1/4) of the number of pads (round up).
5. For Step-Crown pads: (which are 1/8 thinner than standard pads)
 - a) # Step Crown pads = # rows * 2
 - b) For the # of Craft-Lag pads, subtract 20 (or twice the width of step-crown pad) from the face width. Use this in step 2 above.

Note: 3/4" thickness is available in several styles, contact your local PPI Rep, for availability.
(to specify 3/4" thickness, add -3/4 to part number, e.g. CL500-3/4)

Quantities are based on using all short lengths produced in cutting of pads. For more information or complete sets, contact your local PPI Representative.

PART NUMBER	COMPOSITION	DURO-METER
CRAFT-LAG (72 inches long, 14 lbs each)		
CL 500	SBR	60
CL 500/9	SBR (SS BACK)	60
CL 501	NEOPRENE	60
CL 501/9	NEOPRENE (SS BACK)	60
CL 502	NITRILE	60
CL 503	EPDM	60
CL 504	WHITE NEOPRENE	60
CL 505	NITRILE, SMOOTH	60
CL 505/9	CHLOROBUTYL (SS BACK)	60
CL 506	SBR	40
CL 507	SLIP RESISTANT	60
CL 512	HYPALON	60
CL 960	SBR, SMOOTH	40
CL 961	NEOPRENE, SMOOTH	40
CL 965	SBR, SMOOTH	60
STEP CROWN (10 inches long, 1.75 lbs each)		
CL 800	SBR	60
CL 800/9	SBR (SS BACK)	60
CL 801	NEOPRENE	60
CL 860	SBR SMOOTH (SS BACK)	40
EZ LAG (72 inches long, 14 lbs each)		
EZ 500	SBR	60
EZ 501	NEOPRENE	60
RETAINERS (72 inches long)		Weight
Type 10	STANDARD DOUBLE RETAINER	1.9#
Type 11	STANDARD SINGLE RETAINER	1.4#
Type 20	STAINLESS DOUBLE RETAINER	1.9#
Type 21	STAINLESS SINGLE RETAINER	1.4#

OD	# of Rows	Face Width															
		12	14	16	18	20	26	32	38	44	51	54	60	66	72	78	
6	3	1	1	1	1	1	2	2	2	2	3	3	3	3	4		
8	4	1	1	1	1	2	2	2	3	3	3	4	4	4	5		
10	5	1	1	2	2	2	2	3	3	4	4	5	5	5	6		
12	6	1	2	2	2	2	3	3	4	4	5	5	6	6	7		
14	7	2	2	2	2	2	3	4	4	5	5	6	6	7	8		
16	8	2	2	2	2	3	3	4	5	5	6	6	7	8	9		
18	9	2	2	2	3	3	4	4	5	6	7	7	8	9	10		
20	10	2	2	3	3	3	4	5	6	7	8	8	9	10	11		
24	12	2	3	3	3	4	5	6	7	8	9	9	10	11	14		
30	15	3	3	4	4	5	6	7	8	10	11	12	13	14	17		
36	18	3	4	4	5	5	7	8	10	11	13	14	15	17	20		
42	21	4	5	5	6	6	8	10	12	13	15	16	18	20	23		
48	24	4	5	6	6	7	9	11	13	15	17	18	20	22	27		
54	27	5	6	6	7	8	10	12	15	17	20	21	23	25	30		
60	30	5	6	7	8	9	11	14	16	19	22	23	25	28	33		
72	36	6	7	8	9	10	13	16	19	22	26	27	30	33	40		

CORPORATE OFFICE

PO Box 287
Pella, IA 50219
www.ppipella.com

800.247.1228
641.628.3115
fax 641.628.3658

WEST COAST

Service Center
Sacramento, CA
800.821.9798
fax 916.386.0545

SOUTHWEST

Service Center
Arlington, TX
800.247.1228
fax 641.628.3658

NORTHEAST

Service Center
Lewisberry, PA
800.247.1228
fax 641.628.3658

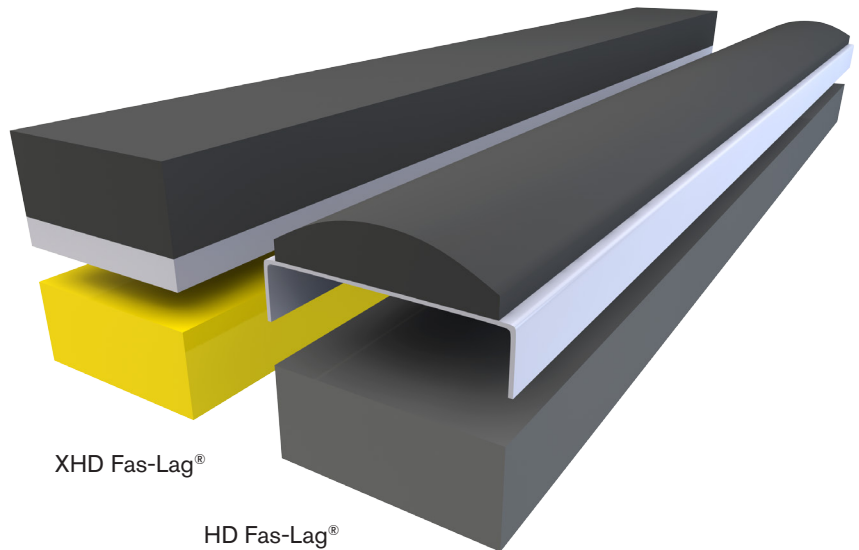
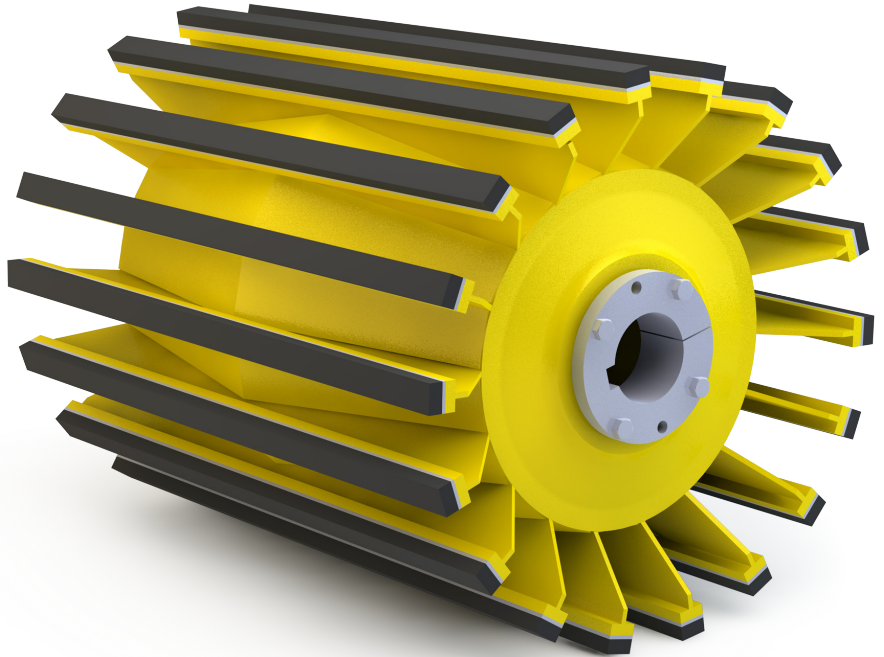
SOUTHEAST

Service Center
Cleveland, TN
800.247.1228
fax 641.628.3658

FEATURES AND BENEFITS:

Available at our nationwide service centers

- Retrofit and/or field replaceable
- Sized to fit our Heavy Duty, Mine Duty & Quarry Duty Max
- Standard black SBR 60+/-5 durometer
- Available in other compounds & colors, call for more info



XHD Fas-Lag[®]

HD Fas-Lag[®]

FAS-Lag[®] is a registered trademark of Precision Pulley & Idler

CORPORATE OFFICE

PO Box 287
Pella, IA 50219
www.ppipella.com

800.247.1228
641.628.3115
fax 641.628.3658

WEST COAST

Service Center
Sacramento, CA
800.821.9798
fax 916.386.0545

SOUTHWEST

Service Center
Arlington, TX
800.247.1228
fax 641.628.3658

NORTHEAST

Service Center
Lewisberry, PA
800.247.1228
fax 641.628.3658

SOUTHEAST

Service Center
Cleveland, TN
800.247.1228
fax 641.628.3658



FAS-LAG® ORDERING INFORMATION

For Properties of Rubber used in our Lagging, please refer to the back of the Lagging flyer or page 7 of our Pulley Catalog.

1. Select the Fas-Lag part number in the chart to the right. (for more information on suitability of lagging composition for your application, see the pulley catalog. For other types contact your local PPI Representative. Some compounds may require an extended delivery.)
2. To determine the number of Fas-Lag pads needed use the chart at the bottom of the page. Or use the following formula:
of pads = # rows * Face Width / 38 (round up).
3. For XFLF Pads for Quarry Max Wings
of pads = # rows * Face Width / 54 (round up)

FLF2 PN (1 ¼ WIDE)	FLF3 PN (1 ¼ WIDE)	COMPOSITION	DURO-METER
999401	999501	SBR	60
999402	999502	SBR	45
999403	999503	SBR	70
999404	999504	NEOPRENE	60
999405	999505	NEOPRENE	45
999406	999506	NEOPRENE	70
999407	999507	WHITE NEOPRENE	60
999408	999508	NITRILE	60
999409	999509"	WHITE NITRILE	60
XHD FAS-LAG (54" LONG - 2" WIDE X 1" THICK)			
999500	SBR		60

OD	#OF ROWS	QUANTITY OF FAS-LAG PADS FOR FACE WIDTHS															
		12	14	16	18	20	26	32	38	44	51	54	60	66	72	78	
8	7	3	3	3	4	4	5	6	7	9	10	10	12	13	14	15	
10	8	3	3	4	4	5	6	7	8	10	11	12	13	14	16	17	
12	8	3	3	4	4	5	6	7	8	10	11	12	13	14	16	17	
14	10	4	4	5	5	6	7	9	10	12	14	15	16	18	19	21	
16	10	4	4	5	5	6	7	9	10	12	14	15	16	18	19	21	
18	12	4	5	6	6	7	9	11	12	14	17	18	19	21	23	25	
20	12	4	5	6	6	7	9	11	12	14	17	18	19	21	23	25	
24	14	5	6	6	7	8	10	12	14	17	19	20	23	25	27	29	
30	16	6	6	7	8	9	11	14	16	19	22	23	26	28	31	33	
36	18	6	7	8	9	10	13	16	18	21	25	26	29	32	35	37	
42	22	7	9	10	11	12	16	19	22	26	30	32	35	39	42	46	
48	24	8	9	11	12	13	17	21	24	28	33	35	38	42	46	50	
54	28	9	11	12	14	15	20	24	28	33	38	40	45	49	54	58	
60	30	10	12	13	15	16	21	26	30	35	41	43	48	53	57	62	

OD	#OF ROWS	QUANTITY OF XHD FAS-LAG PADS FOR FACE WIDTHS															
		12	14	16	18	20	26	32	38	44	51	54	60	66	72	78	
8	7	2	2	3	3	3	4	5	5	6	7	7	8	9	10	11	
10	8	2	3	3	3	3	4	5	6	7	8	8	9	10	11	12	
12	8	2	3	3	3	3	4	5	6	7	8	8	9	10	11	12	
14	10	3	3	3	4	4	5	6	8	9	10	10	12	13	14	15	
16	10	3	3	3	4	4	5	6	8	9	10	10	12	13	14	15	
18	12	3	4	4	4	5	6	8	9	10	12	12	14	15	16	18	
20	12	3	4	4	4	5	6	8	9	10	12	12	14	15	16	18	
24	14	4	4	5	5	6	7	9	10	12	14	14	16	18	19	21	
30	16	4	5	5	6	6	8	10	12	14	16	16	18	20	22	24	
36	18	4	5	6	6	7	9	11	13	15	17	18	20	22	24	26	
42	22	5	6	7	8	9	11	14	16	18	21	22	25	27	30	32	
48	24	6	7	8	8	9	12	15	17	20	23	24	27	30	32	35	
54	28	7	8	9	10	11	14	17	20	23	27	28	32	35	38	41	
60	30	7	8	9	10	12	15	18	22	25	29	30	34	37	40	44	

CORPORATE OFFICE

PO Box 287
Pella, IA 50219
www.ppipella.com

800.247.1228
641.628.3115
fax 641.628.3658

WEST COAST

Service Center
Sacramento, CA
800.821.9798
fax 916.386.0545

SOUTHWEST

Service Center
Arlington, TX
800.247.1228
fax 641.628.3658

NORTHEAST

Service Center
Lewisberry, PA
800.247.1228
fax 641.628.3658

SOUTHEAST

Service Center
Cleveland, TN
800.247.1228
fax 641.628.3658

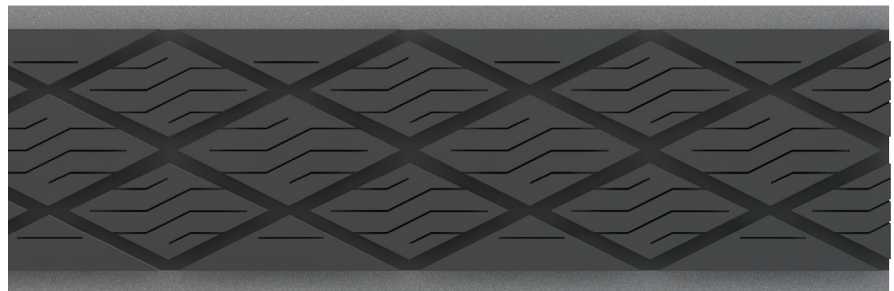
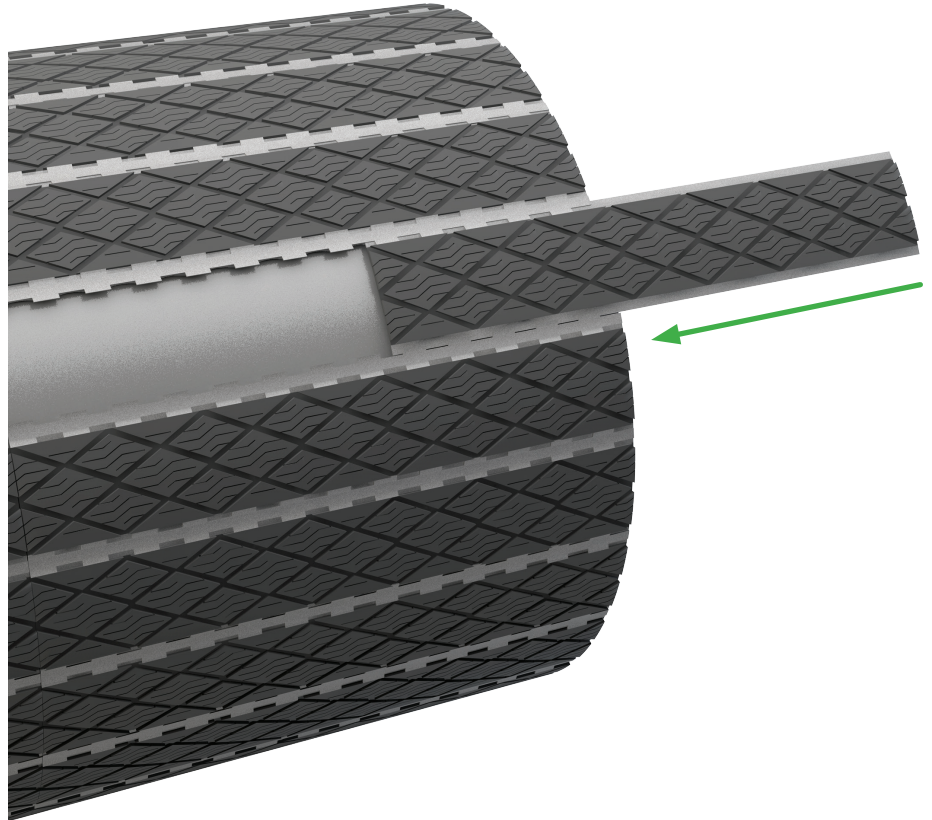
FEATURES AND BENEFITS:

- On the spot re-lagging
- Reduces Inventory
 - Eliminates stocking various sizes
- Field Formable
 - Pads can be bent in the field to fit different pulley diameters
 - Not recommended for diameters less than 12"
- Interchangeable with PPI Craft-Lag[®] and Holz lagging

AVAILABLE:

- EZ-500 in 60 durometer - SBR
- EZ-501 in 60 durometer Neoprene - SOF

For additional information,
see Craft-Lag literature



EZ-Lag[™] is a trademark of Precision Pulley & Idler

Craft-Lag[®] is a registered trademark of Precision Pulley & Idler

CORPORATE OFFICE

PO Box 287
Pella, IA 50219
www.ppipella.com

800.247.1228
641.628.3115
fax 641.628.3658

WEST COAST

Service Center
Sacramento, CA
800.821.9798
fax 916.386.0545

SOUTHWEST

Service Center
Arlington, TX
800.247.1228
fax 641.628.3658

NORTHEAST

Service Center
Lewisberry, PA
800.247.1228
fax 641.628.3658

SOUTHEAST

Service Center
Cleveland, TN
800.247.1228
fax 641.628.3658