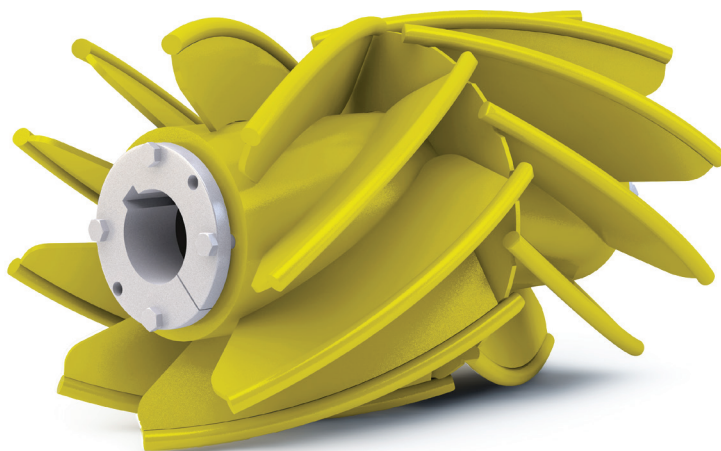
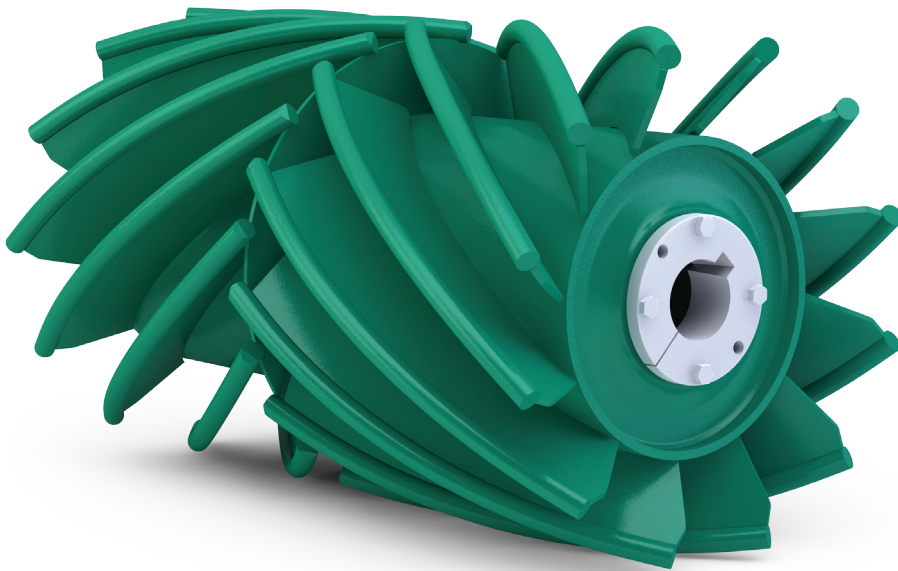


FEATURES AND BENEFITS:

- Wing angles of up to 45°
 - Provide unmatched expulsion of material and wing folding resistance
 - Allow multiple points of contact with wider gaps to further reduce the chance of material entrapment
- Radius crown design applies less stress on the belt for increased belt life, while still providing belt tracking capabilities
- A center reinforcement ring increases wing strength
- Available in two classes to better match application requirements

SPECIFICATIONS:

- Available in diameters of 12" to 72" and face widths of 12" to 78"
- Herringbone Wing[®] (HBW)
 - 1" cold drawn round contact bar on 12" to 20" diameter wings
 - 1-1/4" cold drawn round contact bar on 24" to 72" diameter wings
 - 3/8" wings
- CEMA Herringbone Wing[®]
 - 3/4" cold drawn round contact bar
 - 1/4" wings



INSTALL WITH HERRINGBONE IN DIRECTION OF BELT TRAVEL

PATENT PENDING

CORPORATE OFFICE

PO Box 287
Pella, IA 50219
www.ppipella.com

800.247.1228
641.628.3115
fax 641.628.3658

WEST COAST

Service Center
Sacramento, CA
800.821.9798
fax 916.386.0545

SOUTHWEST

Service Center
Arlington, TX
800.247.1228
fax 641.628.3658

NORTHEAST

Service Center
Lewisberry, PA
800.247.1228
fax 641.628.3658

SOUTHEAST

Service Center
Cleveland, TN
800.247.1228
fax 641.628.3658